

## APPLICATION SUGGESTIONS

1. Vibrators are placed 5' to 10' apart on alternate side of form. Spacing depends on height of form and slump of concrete. Start by mounting vibrators 2 to 3' from the ends, 16 to 24" from bottom.
2. Start vibrators when concrete reaches 6" to 10" above them. Continue vibrating until a flat glistening surface appears on top and no more air bubbles break on surface.
3. The most popular vibrators for the prestressed and precast industries where a large mass of concrete has to be vibrated are the high frequency pneumatic SVR line (p14-15). An alternative in the electric line is the 2P, 3600 rpm, 3-phase units (p16-17).

MODEL	PATTERN	DISTANCE IN FEET BETWEEN VIBRATORS; VIBRATORS ON ALTERNATING SIDES										
		12"	18"	12"	6"	12"	6"	12"	6"	12"	6"	
		SPUR T	DOUBLE T	INVERT T	SEAM & SHEAR	BEAM & COLUMN	PIERS & COLUMN	TABLES	TELT TABLES	SOLID PANELS	ROLLUP CORE	VERTICAL
SVR-1000*	A		12'	6'							6'	
	B		12'	6'	6'	8'	10'		5'	10'		
	C		12'	6'	6'	8'	10'			12'		
SVR-2000* & 3000*	A'	12'	10'		12'	6'	8'	15'		10'	16'	24'
	B	12'	10'		12'	6'	8'	15'	10'	10'	16'	24'
	C	12'	12'		12'	6'	8'	15'		10'	16'	24'
SVR-3000*	A	12'	12'		12'	12'	12'	18'	12'	12'	18'	24'

\*Based on 3"-5" slump concrete, steel form, "average" conditions. Other shapes and conditions see "General Guide" on next page.

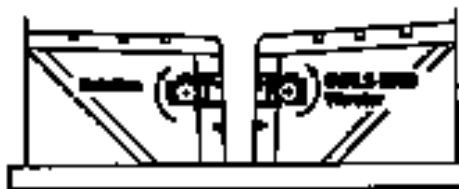
**DO YOU KNOW?**  
 VIBCO is the only VIBCO distributor in your area!  
 Call 800-633-0032 at any time.  
 We're always on top!



## SINGLE T



**SVRLS-5500** Vibrator every 10' alternating sides. Stiffen wall with 8 or 10" channel. Do not use original stiffeners for vibrator mount.



Vibrators mounted high on stem. Spacing: 12' alternating sides on 8' T. 10' on 10' T.

## DOUBLE T

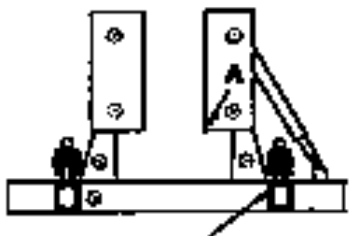


Permanently mounted **SVRFS-5500** is spaced 18' on alternating sides. Use of isolation mounts to "float" form is recommended. On all high stem forms vibrators are mounted close to wing of T. Alternate vibrator **SVRLS-5500**.



Add I-Beam or channel iron for strength and vibrator mount. Use **SVRLS-5500** with **LC** mount. For permanent mount use **SVRFS-4000** Vibrator for extra fine finish.

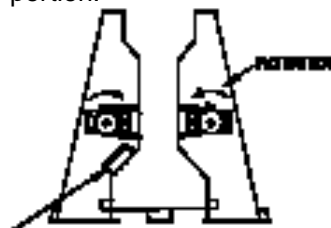
## INVERTED T



**SVRLS-5500** vibrator is used with **LC**-mounting bracket. Construct a box of 2 channel irons for sturdy vibrator mount. Spacing 9' alternating sides. Alternate mount is to place vibrators at A. For **SVRLS-8000** use 10' - 12' spacing.

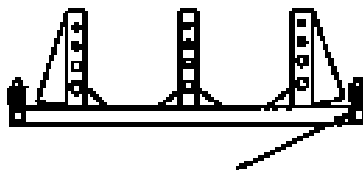
## GIRDER

**SVRLS-5500** vibrator is used. Mounted on 6" channel with **LC**-bracket welded to form side just above slope portion.



Alternate mounting for vibrator good for removing trapped air on inverse surface.

## DUAL PILING



**SVRLS-5500** construct channel iron box for mounting vibrator. High force vibration is necessary to transfer across this wide form. Spacing: 10' on alternating sides. 12' where **SVRLS-8000** is selected.