

## 12 & 24 Volt DC

- Totally enclosed
- Double armoured housing
- Watertight
- Continuous duty

**Model  
DC-500**



The **DC-500** is o-ring sealed for power washdown and designed with completely smooth surface to help eliminate most of the concrete buildup. Double armoured housing protects motor parts and withstands rapping with cleaning tools. Cable inlet on bottom eliminates cable hangups and breakage. Cable is also protected by a plastic hose. Replaces Bosch Model 19861.

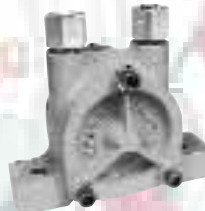
### **OTHER PUMP VIBRATORS** (for technical data see General Catalog)



**DC-100**



**HLF-700**



**B-250, B-320**



**BV-250, BV-320**

**ELECTRIC:** All units 12 or 24 volt DC, sealed to handle the environment, application proven for quality and long life.

**PNEUMATIC:** BV-250 and 320 can be run off your truck's air supply. Lubrication required. Equipped with threaded exhaust for muffler or for connecting a hose to lead off air.

**HYDRAULIC:** B-250 and 320 turbine design, discharge is direct to oil reservoir. HLF-700 connects directly to hydraulic system.

**SELECTION:** DC-500, HLS-700, BVS-320 on truck mounted pumps. DC-100, B-250, BVS-250 on trailer mounted pumps.



**Model BVS-320** on trailer mounted pump.

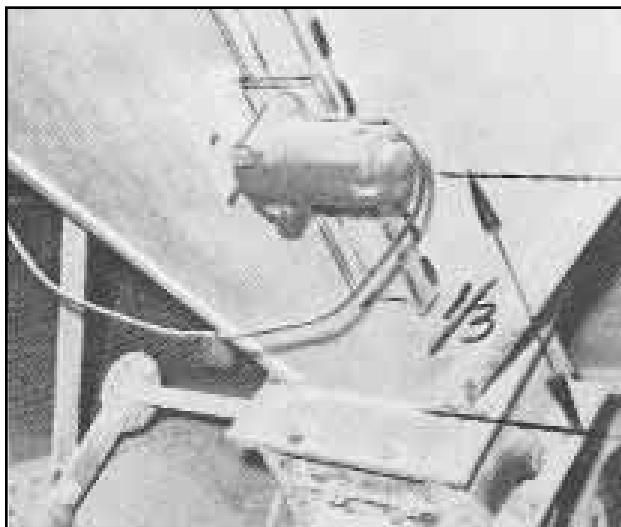


**Model DC-500** vibrator on top of grid.



**Model DC-200** vibrator under screen.

Rule of thumb for sizing vibrators for bins and hoppers: figure out total weight of material in sloping portion of the bin or hopper and divide weight by 10. This figure is the total force needed on the vibrator or vibrators to be selected. (For more information, see General Catalog or Catalog #9803: Vibrators for Sand and Gravel and Ready Mix Concrete Procedures. Use vibrators with 3600 VPM for coarse material such as sand, etc. Over 5000 VPM for fine fluffy materials such as cement, etc.



## CEMENT WEIGH BATCHER

Customer had problem emptying weigh batcher which caused scale inaccuracies, improper mixes and delays in loading. The old fashioned rap-with-a-hammer solution was slow and caused damage to the batcher wall. VIBCO's **Model US-450** 115 volt electric vibrator was mounted on the hopper. See pictures and diagrams. Vibrator was plugged into available light outlet and with a switch, operator turns on vibrator when loading a truck and off when dial scale reads zero. (Comparable pneumatic vibrator **Model VS-320** silent turbine or **Model 55-1-1/2 Piston**). Customer now gets reliable mixes and no delivery or loading delays.

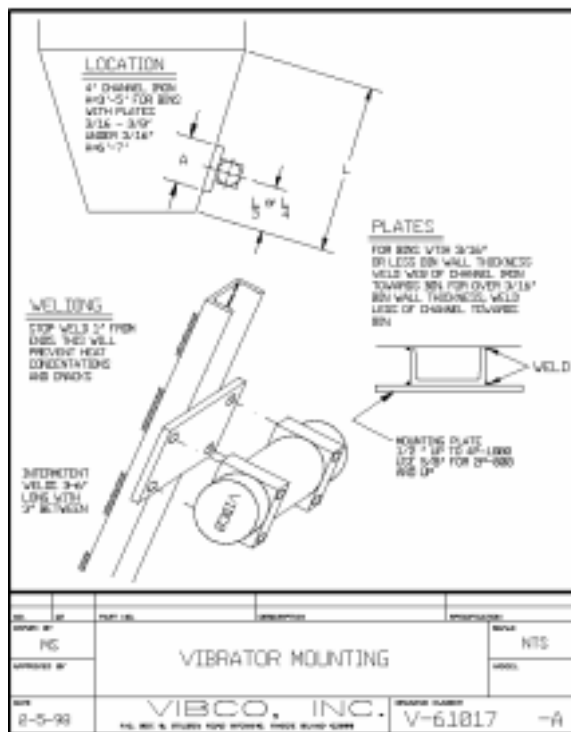
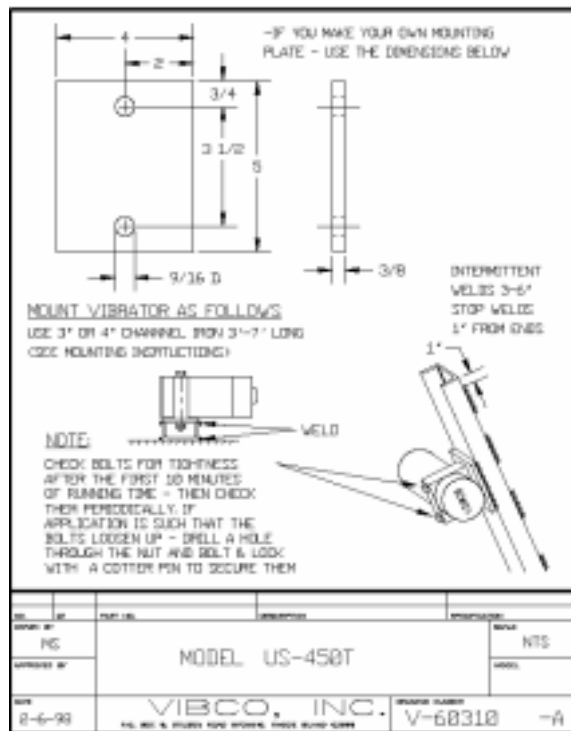
## SAND BIN

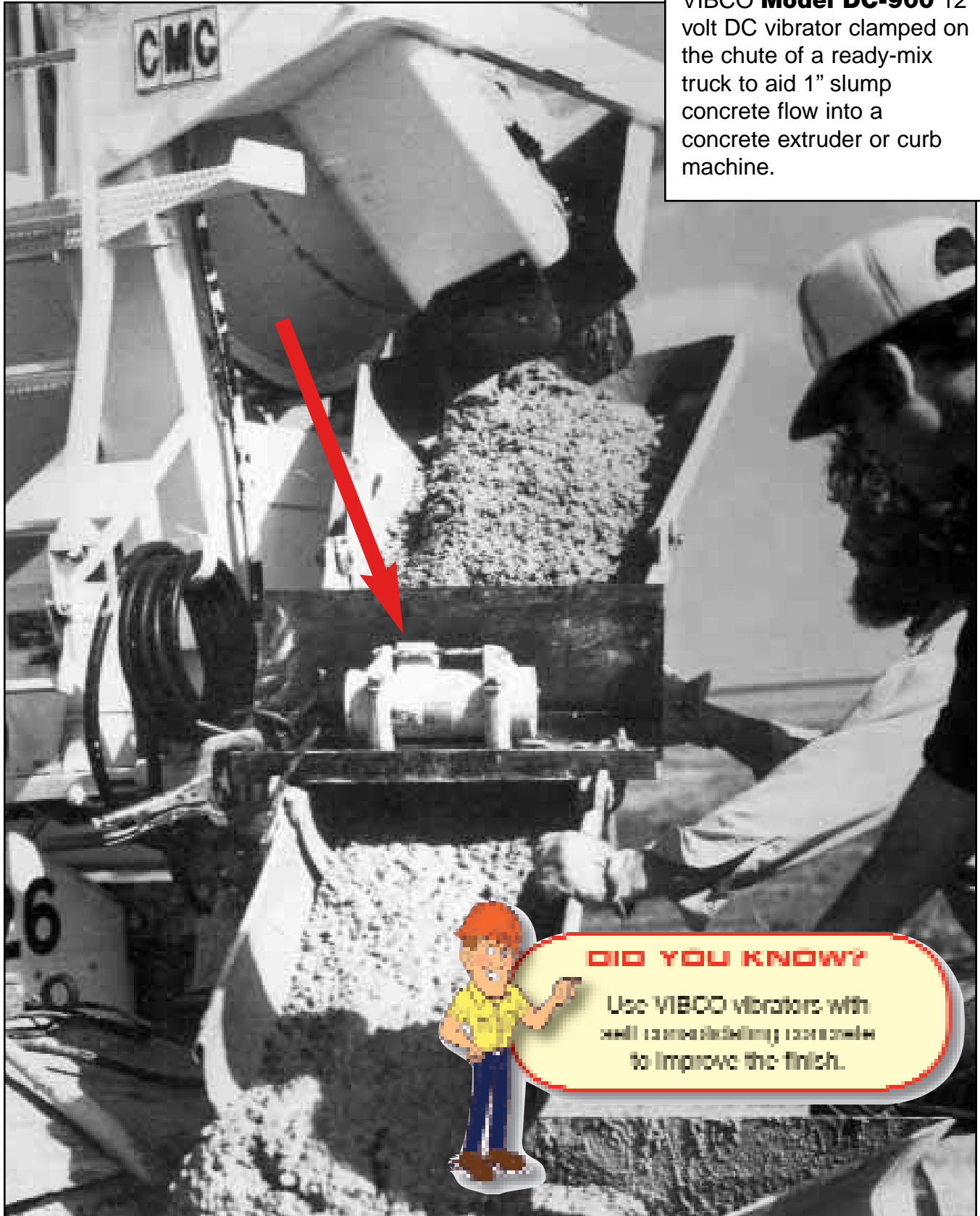
Customer had problem with wet sand sticking to bin sides.

A **Model 2P-800** electric vibrator was mounted to bin side.



See photo and mounting diagram. Sand now moves freely - customer has no further problems.





VIBCO **Model DC-900** 12 volt DC vibrator clamped on the chute of a ready-mix truck to aid 1" slump concrete flow into a concrete extruder or curb machine.

**DID YOU KNOW?**

Use VIBCO vibrators with well consolidating concrete to improve the finish.

## Charge Hopper Build-up is Costly and Time Consuming for Ready Mix Truckers

Problem solved by installing Model VS-250 Air Operated Vibrator

- Prevents sand build-up • Low cost and silent
- Reduces batch time and reduces spillage by reducing sand build-up

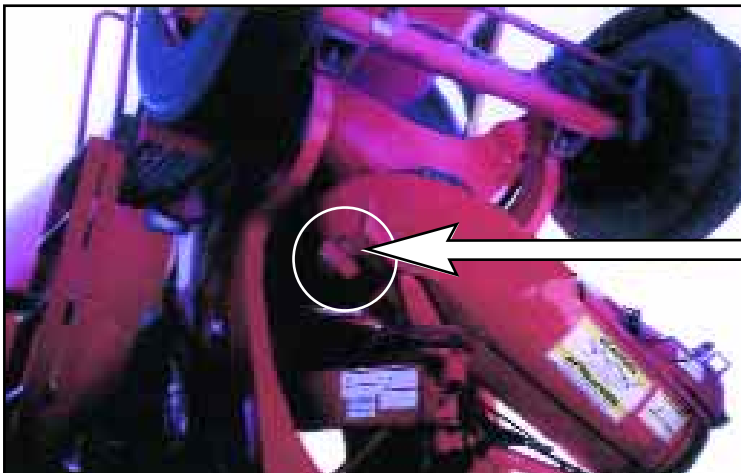


**VIBCO VS-250** air vibrator mounted on the charge hopper of a front discharge mixer truck. (Complete kit available.)

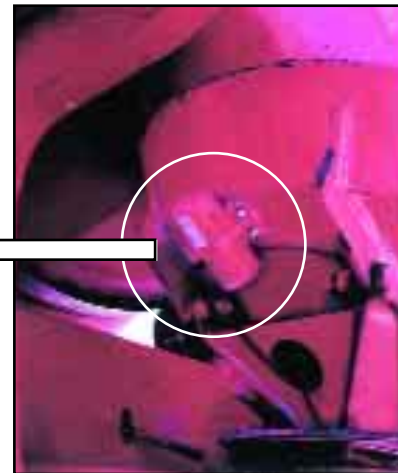
**CUSTOMER COMMENTS:** "This small vibrator does a great job by preventing build-up in the charge hopper. I don't have to shovel like I did before. I'm glad they have decided to put one of these vibrators on all the trucks."



## Concrete Clogging Discharge Chute on Transit Mixers



**Standard aluminum housing** - Note: comparable pneumatic unit also available.



**DC-60** mounted on back side of chute

**CUSTOMER COMMENTS:** "This small 12 volt DC-vibrator solved two problems for us. It cleaned out the material that had built-up behind the rubber boot and it eliminated the hazards the operator faced when climbing up on the truck to clean out the chute. When delivering a stiff mix, the vibrator made the concrete flow like water. We have now installed DC-60 vibrators on our complete fleet." (Complete kit available.)