

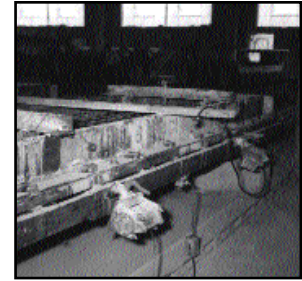
# Mounting Brackets



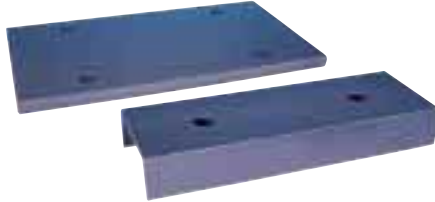
Weigh Batchers with Model 55-1-1/2 Piston



Septic Tank with US-900 & Wedge Bracket



US-900 with Wedge Bracket on precast mold



Mounting Plates & Channels



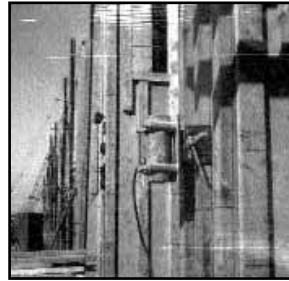
UWF-3 Heavy Duty Wedge Bracket



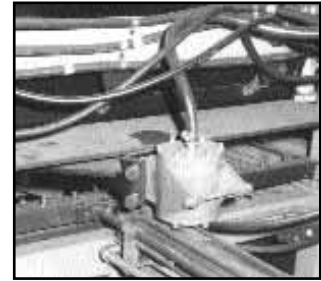
UWF-1 - Female Bracket for Wedge Form Bracket



Burial Vault — US 450T with Pin Bracket



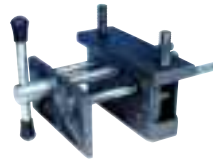
US-900 with wooden form clamp on column



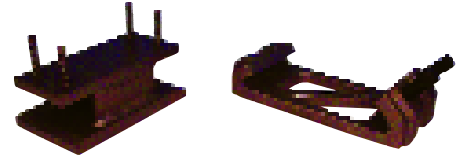
SVR-5500 with Shoe Bracket casting panels



Pin-Bracket with UPF-Female



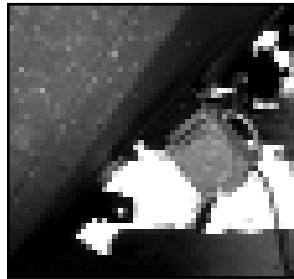
Wood-Form Bracket



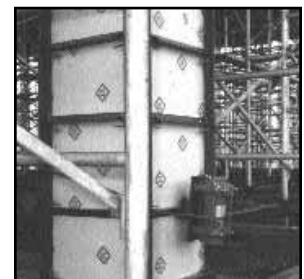
Adapter Bracket-For-SB Shoe Bracket



SVRLS-5500 on precast form



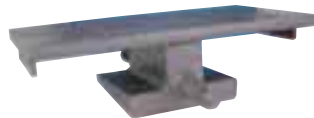
Electrical 2P-450 on Railroad Car Wedge



US-1600 with "Clamp-On" bracket on wooden form with steel reinforcing



Lug-Bracket - LC-1    Lug-Bracket - LC-2



Rail-Road Car Wedge Bracket



Clamp-On Bracket

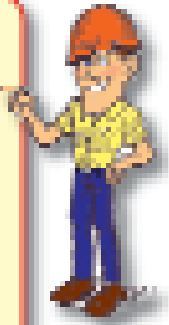
# Mounting Brackets

## STANDARD

| Model                              | Mounting Bracket       | Clamp Block        | Car Shaker & Form Bracket<br>Clamp-On Bracket | Car Shaker Wedge Bracket<br>Wedge Type Bracket | Adapter Plate<br>Form & Bin<br>SB-Shoe Bracket | Wedge Type Form Bracket<br>UWF-Female | Pin Form Bracket<br>UPF-Female | Wooden Form Bracket |
|------------------------------------|------------------------|--------------------|---|--|--|---------------------------------------|--------------------------------|---------------------|
| 2P-75                              | VMM-11 (2)             |                    | VMC-81 (8)                                    |  |  |                                       |                                |                     |
| 2P-100                             | VMM-111 (2)            |                    | VMC-82 (8)                                    |  |  |                                       |                                |                     |
| 2P-150                             | VMM-12 (2)             |                    | VMC-83 (8)                                    |  |  |                                       |                                |                     |
| 2P-200, 4P-350,<br>2P-450, 4P-700* | VMM-2 (7)              |                    | VMC-2 (18)                                    | VMW-2 (16)                                     | VMH-2 (7)                                      |                                       |                                | VMF-2 (18)          |
| 4P-1000*, 1 ph                     | VMM-4 (8)              |                    | VMC-4 (20)                                    | VMW-4 (18)                                     | VMH-4 (10)                                     |                                       |                                | VMF-4 (20)          |
| 6P-300*, 6P-500* 3 ph              | VMM-3 (8)              |                    | VMC-3 (20)                                    | VMW-3 (18)                                     | VMH-3 (10)                                     |                                       |                                | VMF-3 (20)          |
| 2P-800 1 ph                        | VMM-61 (10)            |                    | VMC-61 (22)                                   | VMW-61 (20)                                    | VMH-61 (10)                                    |                                       |                                |                     |
| 3 ph                               | VMM-5 (9)              |                    | VMC-4 (22)                                    | VMW-5 (20)                                     | VMH-5 (10)                                     |                                       |                                |                     |
| 2P-1700 3 ph                       | VMM-6 (10)             |                    | VMC-6 (22)                                    |  |  |                                       |                                |                     |
| 4P-1400 3 ph                       | VMM-6 (10)             |                    | VMC-6 (22)                                    |  |  |                                       |                                |                     |
| 2P-2500,-3500,-4500 3 ph           | VMM-7 (11)             |                    | VMC-7 (24)                                    |  |  |                                       |                                |                     |
| 4P-2000 3 ph                       | VMM-6 (10)             |                    | VMC-6 (22)                                    |  |  |                                       |                                |                     |
| 6P-1000 3 ph                       | VMM-6 (10)             |                    | VMC-6 (22)                                    |  |  |                                       |                                |                     |
| 8P-500 3 ph                        | VMM-6 (10)             |                    | VMC-6 (22)                                    |  |  |                                       |                                |                     |
| 2P-5500,<br>4P-3000 & 5000         | VMM-8 (16)             |                    |   |  |  |                                       |                                |                     |
| 6P-1500 & 2500                     | VMM-8 (16)             |                    |   |  |  |                                       |                                |                     |
| 8P-750 & 1200                      | VMM-8 (16)             |                    |   |  |  |                                       |                                |                     |
| SPR, SPRT-20, 21,<br>40, 60 & 80   | SPM-1 (2)<br>SPM-2 (3) | C-2 (3)<br>C-2 (3) |   |  |  |                                       |                                |                     |
| SPWT                               | SPWM (3)               |                    | SPWC (8)                                      |  |  |                                       |                                |                     |
| SCR-100, US-100<br>& DC-100        | UM-1 (2)               | C-2 (3)            |   |  |  |                                       |                                |                     |
| SCR-200, US-450<br>DC-450          | UM-2 (4)               | C-4 (4)            |   |  | UA-1 (5)                                       | UW-4* (8)                             | UW-1 (5)                       |                     |
| SCR-350, US-700,<br>DC-700         | UM-7                   | C-4                |   |  |  | UW-5                                  |                                |                     |
| SCR-500                            | SCRM-2 (8)             |                    | SCRC-2 (20)                                   | SCRW-2 (18)                                    | SCRA-2 (10)                                    |                                       |                                | SCRF-2 (20)         |
| SCR-1000                           | SCRM-1 (8)             |                    | SCRC-1 (20)                                   | SCRW-1 (18)                                    | SCRA-1 (10)                                    |                                       |                                | SCRF-1 (20)         |
| SFC                                | SFCM (4)               | C-4 (4)            |   |  | SFCH (5)                                       |                                       |                                |                     |
| FC                                 | FCM-1 (5)              |                    | FBB-1 (15)                                    |  | FCH-1 (7)                                      | UW-2* (8)                             |                                |                     |
| US-900, DC-900                     | UM-3 (6)               |                    | UC-1 (15)                                     |  | UA-2 (7)                                       | UW-3* (8)                             |                                | USF-2 (15)          |
| US-1600, DC-1600                   | UM-4 (6)               |                    | UC-2 (16)                                     |  | UA-3 (7)                                       |                                       |                                | USF-3 (15)          |
| BB, BBS, FBS                       |                        | C-1                |   |  |  |                                       |                                |                     |
| B, BV, BVS-130                     | BVM-1                  | C-2                |   |  |  |                                       |                                |                     |
| B, BV, BVS-190                     | BVM-2                  | C-2                |   |  |  |                                       |                                |                     |
| B, BV, BVS-250                     | BVM-3                  | C-2                |   |  |  | BVT-4                                 | BVP-5                          |                     |
| B, BV, BVS-320                     | BVM-4                  | C-3                |   |  | BVH-4  | BVT-3                                 | BVP-4                          | BVF-4               |
| B, BV, BVS-380                     | BVM-5                  | C-4                |   |  | BVH-3  | BVT-2                                 | BVP-3                          | BVF-3               |
| BVS-440/510                        | BVM-6                  | C-4                | BVC-3   |  | BVH-2  | BVT-21                                | BVP-2                          | BVF-2               |
| BVS-510F                           | BCM-61                 |                    | BVC-2   |  | BVH-21   | BVT-1                                 | BVP-21                         | BVF-21              |
| BVS-570                            | BVM-7                  | C-4                | BVC-1   | BVW-1  | BVH-1  |                                       | BVP-1                          | BVF-1               |
| V, VS-130                          | VSM-1                  | C-2                |   |  |  | VST-3                                 |                                |                     |
| VS-190                             | VSM-2                  | C-2                |   |  |  | VST-2                                 | VSP-3                          |                     |
| VS-250                             | VSM-3                  | C-2                |   |  |  | VST-2                                 | VSP-2                          | VSF-2               |
| VS-320, V-320                      | VSM-3                  | C-3                |   |  | VH-1   | VST-1                                 | VSP-1                          | VSF-1               |
| VS-380, V-380                      | VSM-4                  | C-4                |   |  | VH-2   | VST-4                                 |                                | VSF-3               |
| VS-510                             | VSM-5                  |                    | VC-1  |  | VH-3   | CCW-2                                 |                                |                     |
| CCF-2000, -4000                    | CCM-3                  |                    | CCFC-3  | CCFW-3   | CCFH-3   | CCW-3                                 |                                |                     |
| CCF-5000, -7000                    | CCM-1                  |                    | CCFC-1  | CCFW-1   | CCFH-1   |                                       |                                |                     |
| CCL-5000, -7000                    |                        |                    | CCFC-2  | CCFW-2   | CCFH-2   | SVH-1                                 |                                |                     |
| SVR-4000                           | SVM-1                  |                    | SVC-1   |  | SVA-1  | SVH-2                                 | SVP-1                          | SVF-1               |
| SVR-5500                           |                        |                    | SVC-2   | SVW-2  |  |                                       |                                |                     |
| SVRF-5500                          | SVM-2                  |                    | SVC-4   | SVW-4  |  |                                       |                                |                     |
| SVRL, SVRLS-5500,<br>6500, 8000    |                        |                    | CCFC-2  | SVW-2  | CCFH-1   |                                       |                                |                     |
| SVR-8000                           | SVM-2                  |                    | SVC-3   | SVW-3  |  |                                       |                                |                     |
| PF, HF-800, -1200,<br>-1500        | PFM-1                  |                    | PFC-1   | PFW-1  | SVA-6  |                                       |                                |                     |
| PF, HF-3000                        | PFM-2                  |                    | PFC-2   | PFW-2  | PFA-1  |                                       |                                |                     |

### DID YOU KNOW?

VIBCO will design custom brackets to fit your needs. Just call HUBBARD HOOVER to speak with an engineer today!



### DID YOU KNOW?

VIBCO offers a wide selection of manuals available online at [www.vibco.com](http://www.vibco.com). To receive our Quick Reference Manual, or for Full Detail Manuals, whenever you need them.



( ) INDICATES WEIGHT IN LBS.  
\*USE 1 PHASE BRACKETS FOR BOTH 1 & 3 PHASE UNITS.